

transvideo



CineMonitor HD Evolution Operator Manual

Rev. 1.1
Dec 8- 2009
Doc ref:

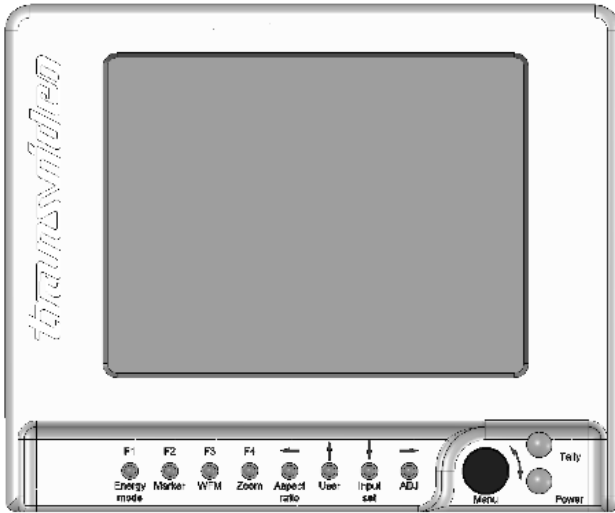


Figure 1 - CineMonitorHD6 front

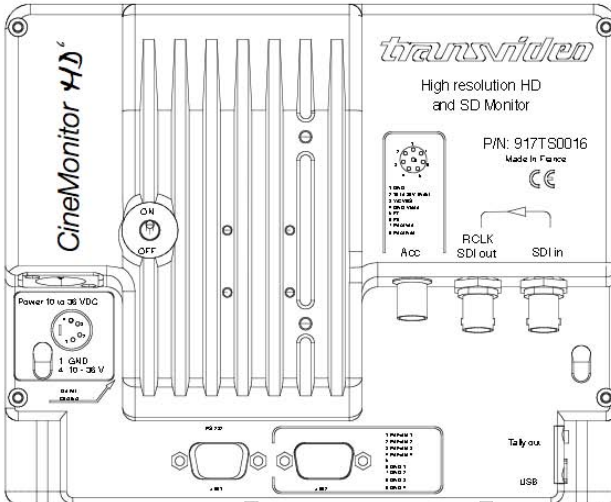


Figure 2 - CineMonitorHD6 back

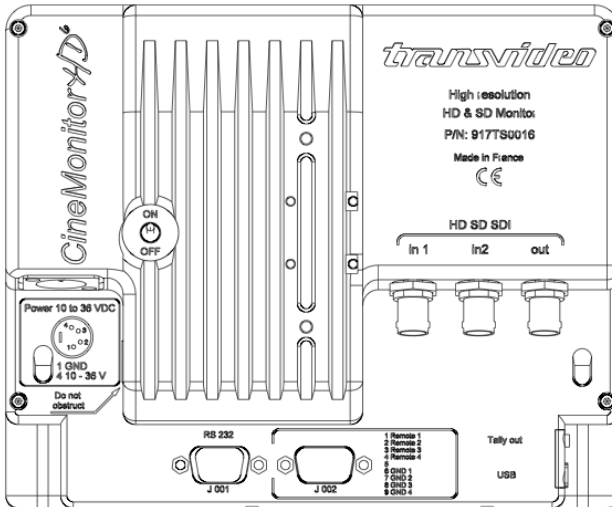


Figure 3 - CineMonitorHD6 back (SDI Only)

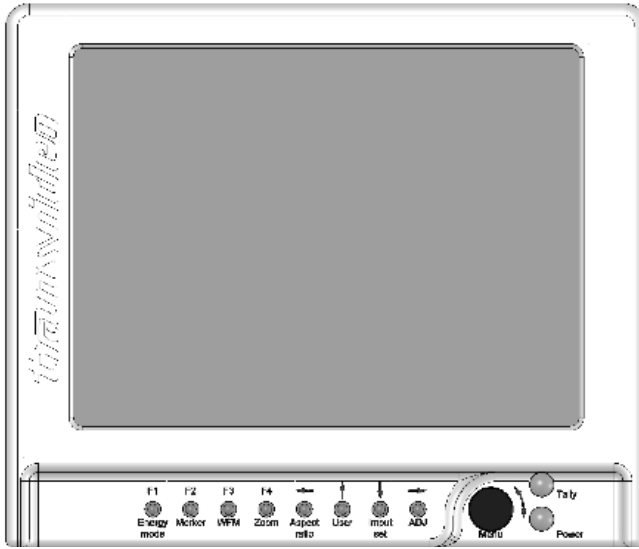


Figure 4 - CineMonitorHD8 front

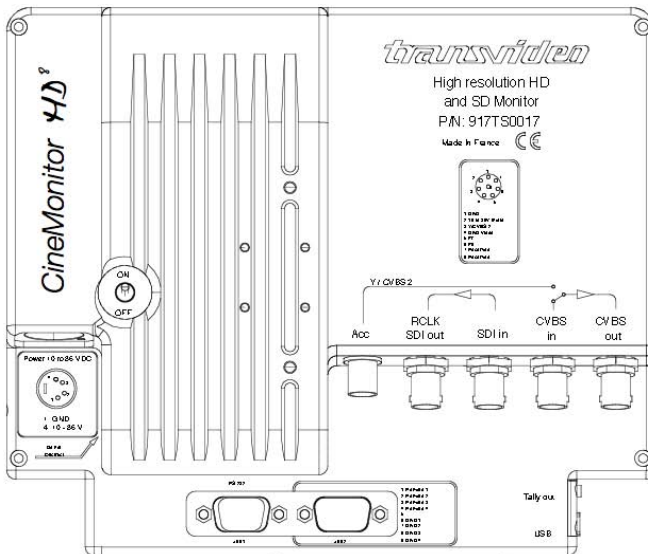


Figure 5 - CineMonitorHD8 back (SDI + Analog)

About

This Operator Manual describes the use of the TRANSVIDEO CineMonitorHD “evolution” family.

The first CineMonitor has been introduced to the Film Industry during year 1995.

The CineMonitorHD “evolution” is our latest contribution to the Digital Cinematography world, including advanced decision tools for the HD world.

The CineMonitorHD evolution family includes the following products:

<i>CineMonitor</i> HD ⁶ <i>SBL evolution</i>	6” HD Monitor SuperBright
<i>CineMonitor</i> HD ⁸ <i>evolution</i>	8” HD Monitor
<i>CineMonitor</i> HD ¹⁰ <i>SB evolution</i>	10” HD Monitor SuperBright
<i>CineMonitor</i> HD ¹² <i>SB evolution</i>	12” HD Monitor SuperBright
<i>CineMonitor</i> HD ¹⁵ <i>SB evolution</i>	15” HD Monitor SuperBright
<i>CineMonitor</i> HD ¹⁵ <i>Studio evolution</i>	15” HD Monitor Studio version

If the physical, electrical and optical characteristics of the products are different, the user interface is the same.

Several configurations are optionally available for this family of products. There is the choice at the order between several input boards, which gives different functionalities described in this document. Some options can be not implemented in your CineMonitorHD.

It is possible to upgrade the CineMonitorHD, for that, please contact your local Transvideo representative.

The products described in this book are professional equipments; they are not designed for consumer use. Utilization of these products implies knowledge of basics in video signal management, HDTV and film making concept.

Table of content

CONDENSED OPERATING INSTRUCTIONS	10
INTRODUCTION.....	11
Unpacking and Inspection	11
Safety Inspection	11
Product Overview.....	12
Front Panel Controls and Indicators.....	12
Rear Panel Controls and Connectors	12
Installation	13
Instrument Positioning	13
Power Requirements	14
OPERATION	15
Start-Up & Power.....	15
Using the direct access functions	15
F1...F4.....	15
Using the menus	16
Direct functions description.....	17
ENERGY MODE	17
MARKERS.....	17
Measure (Waveform, Vectorscope, Histogram).....	18
Rotating knob.....	21
ZOOM.....	22
Arrows & Rotating knob.....	22
ASPECT RATIO	22
USER.....	23
INPUT.....	25
ADJUST	26
MENU FUNCTIONS	27
ADJUSTMENTS.....	27
HUE (TINT).....	27
BRIGHTNESS.....	27
CONTRAST	27
SATURATION.....	27

BLUE CHECK	27
COLORIMETRY	27
MANUAL	27
D56	28
D65	28
GAMMA	28
GAMMA ADJUST	28
STANDARD 0.45	28
Use in LINEAR	28
LOCK	29
TOOLS	29
AUDIO	29
TIMECODE	30
COOKE LENS	31
FOCUS HELPER	32
FRAMELINE	32
HORIZON (if option installed)	34
LIMITS	35
MAX LEVEL	35
WHITE CLIPPING	35
BLACK CLIPPING	35
MIN LEVEL	35
SORIN's MARKER	36
SORIN's MARKER WIDTH	36
OVEREXPOSURE: ON/OFF	36
SORIN'S MARKER: ON/OFF	36
BLACK LIMITS: ON/OFF	36
MEASUREMENT	37
SIGNAL ANALYSIS	37
OVEREXPOSURE: ON/OFF	37
SORIN'S MARKER: ON/OFF	37
BLACK LIMITS: ON/OFF	37
1 LINE	37
12 LINES	37
ALL LINES	37
SPOT INTENSITY	37
SPOT INTENSITY	37
RETICULE INTENSITY	37
TALLY	38
NORMAL	39
HORIZONTAL FLIP	39
VERTICAL FLIP	39
PICTURE REVERSE	39
AUTO REVERSE	40
AUTO FLIP VERTICAL ONLY	40
DISPLAY MODE	41
COLOR	41
GREEN	41
B&W	41
SCAN	41
FULL	41
TECHNICAL	42

CVBS STD SELECT	42
NTSC	42
REVERSE SCROLLING	42
ACCESSORY	42
COMPONENT RGB	42
COMPONENT YPrPb	42
CVBS	42
VOLTAGE ALARM LEVEL	43
VOLTAGE ALARM DISPLAY	43
EXIT TEMPO	43
LED DIMMER	43
MEMORY	44
MEM 1 ... MEM 4	44
SAVE	44
RECALL	44
PRESET	44
PRESET ALL INPUTS	44
PRESET SELECTED INPUT	44
SERVICE & MAINTENANCE	45
General	45
Useful tips	45
CLEANING	45
FULL RESET	45
Software and Firmware	46
Calibration	46
Product Return	46
ACCESSORIES	47
SPECIFICATIONS	50
CONNECTORS	52
TRANSDVIDEO EQUIPMENT LIMITED WARRANTY	53

WARNING and CAUTION

WARNING: There is very high voltage inside of the component. Risk of injury or death.

WARNING: This product must be used in a correct grounded electrical environment; ground defects can create severe problems to the equipment, the picture quality and even cause danger for the user.

WARNING: Copyright law and international treaties protect this product, its design and its software. Unauthorized reproduction or distribution of this product or its design or its software or any portion of them, may result in severe civil and criminal penalties, and will be prosecuted to the maximum extent possible under the law.

CAUTION: Warranty is void if the product is opened. The unit contains electrostatic sensitive devices, which can be damaged or destroyed if you touch them. Refer to the standard ESD procedures before disassembly of the component. Very high voltage are present in the unit, there is some risk of electric shock if opened by a non accredited technician.

Condensed Operating Instructions

- ① Connect an adapted power supply to the XLR connector or a battery if any socket available.
- ② Connect a video source to the input
- ③ Switch on the monitor with the back switch
- ④ Select the correct input with INPUT SEL

For more information, please read the manual in SECTION III
“OPERATION”

Introduction

Unpacking and Inspection

The CineMonitorHD is delivered in a rugged waterproof case. Use this case for storage and transportation.

Control the content of the package accordingly to the packing list.

Fill up the warranty card and send it by mail or by fax to your distributor or to the factory.

Safety Inspection

Before using the monitor be sure that the product is not damaged, that the protective glass is not broken and that the connector do not have missing pins, objects inside the housing.

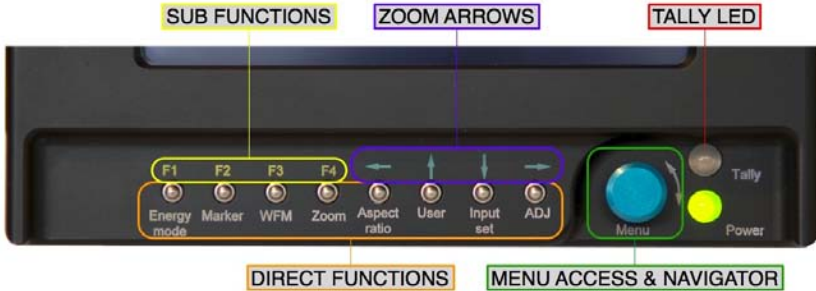
The cables must be in good condition and adapted to the environment where you are working. A bad quality or wrong-wired cable can damage your equipment and/or create interferences. TRANSVIDEO offers high quality cables for cameras, power supplies and all kind of interfaces, please consult us in case of need.

This product must be used in a correct grounded electrical environment; ground defects can create severe problems to the equipment, the picture quality and even cause danger for the user.

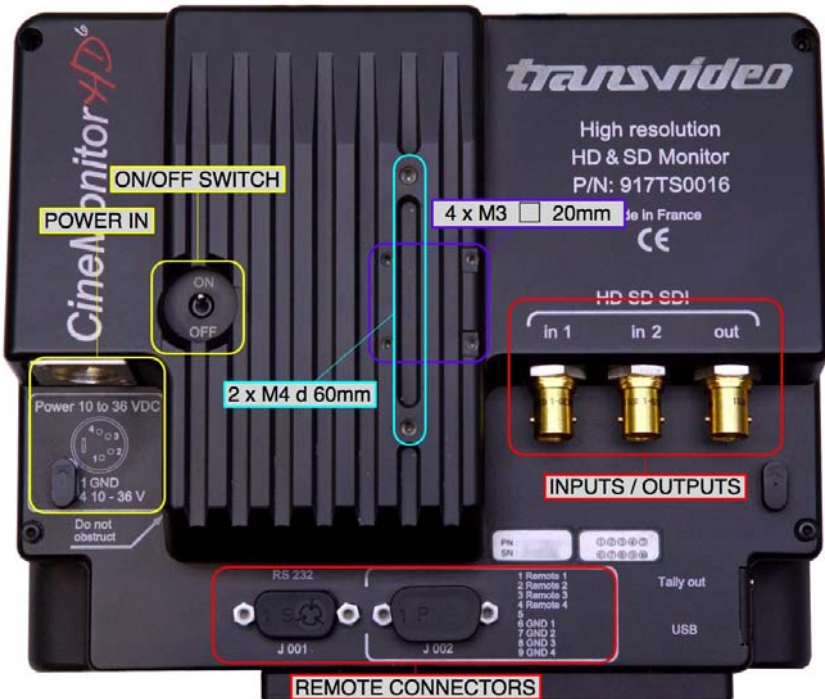
The video cable must be adapted for carrying SDI HD signals; adapted 75 Ω connectors must be used. Damaged cables must not be used with this equipment.

Product Overview

Front Panel Controls and Indicators



Rear Panel Controls and Connectors



Installation

The CineMonitorHD must be securely fixed on the camera or on the location of use. TRANSVIDEO manufactures high quality brackets and accessories for the comfort of use and security for the equipment and user.

Do not use the monitor with loose fixation or damaged brackets it is a question of security for yourself and other persons working on the same location.

Several fixation points have been added to this equipment for secured professional use.

- ① A slide with a ¼-20" nut is delivered as standard equipment with the product. This slide is fixed on the bottom of the monitor.
- ② One or several optional slides can be attached to the sides, back or top of the monitor. 2 x M4 screws attach the slides. Several TRANSVIDEO's accessories can be fixed in these positions; this mounting system is generic for Transvideo since 1990.
- ③ One square of 20mm accepts 4xM3 screws.

Instrument Positioning

The CineMonitorHD needs to be in a ventilated area to be normally cooled.

Long use in closed environment without ventilation can damage the monitor.

Never use the monitor in a plastic bag.

Never use the monitor in full sun with a Raincover.

Power Requirements

Only DC Voltage powers this product.

AC voltage can be used with an appropriate AC/DC converter

Recommended power adaptors:

<i>CineMonitorHD⁶ SBL evolution</i>	Transvideo AL24
<i>CineMonitorHD⁸ evolution</i>	Transvideo AL24
<i>CineMonitorHD¹⁰ SB evolution</i>	Transvideo AL80
<i>CineMonitorHD¹² SB evolution</i>	Transvideo AL80
<i>CineMonitorHD¹⁵ SB evolution</i>	Transvideo AL80
<i>CineMonitorHD¹⁵ Studio evolution</i>	Transvideo AL24

The input power voltage range is extremely wide from 10 to 36 V DC (except specified).

The power consumption slightly varies with the input voltage, the operating temperature and the configuration of the product.

The power supply is protected against reverse polarity.

Over voltage may cause severe damages to the equipment.

For safety of use the CineMonitorHD family feature a galvanic insulation of the DC input. Do not connect the power ground to the chassis of the monitor or to the metallic body of the power connector to keep the galvanic insulation. The galvanic insulation is rated at 1000VDC. The chassis of the monitor is connected to the video ground.

Operation

Start-Up & Power

The ON/OFF Switch is placed on the back of the monitor.
The product needs a certain time to reach its nominal brightness.
This time can vary with the temperature.

When using the optional Battery Holder, the switch of the battery holder overpasses the switch of the monitor.

In OFF position, the power consumption is null.

WARNING RISK OF FIRE: It is always recommended to remove the power source from the monitor when you do not use it and/or when you travel. Especially if you place the monitor in a closed environment (bag, box, ...)

Using the direct access functions

Several direct functions are available from the keypad.

One short press on the pad allows access to the functionalities.

One long press (more than 2 seconds) on the pad allows access to the optional functionalities for the related function (if any).

The rotating knob is a rotary encoder with a push function, it is used to access and navigate in the menus, adjust some parameter values, validate and exit functions by pushing it.

A short push when on "EXIT" exits of the current menu to the previous level (if any) a long push exits from the menu.

F1...F4

One long press (more than 2 seconds) on the direct function pad allows to access to the optional functionalities for the related function (if any). Depending of the function, options and environment, the content of F1 ... F4 can vary. Pressing the pad just under the engraving will activate or

deactivate the sub-function. The activated sub-function is highlighted on the menu by an orange text, un-activated function is displayed in white. In some specific case, F4 can extend the selection to a second page of sub-menu.

Using the menus

The menu gives access to functionalities that do not have direct access from the keypad.

The rotating knob is used to navigate in the menu structure.

Pushing the rotating knob allows to access to the function sub-menu.

Exit of the menu by selecting EXIT or by automatic temporization (temporization can be adjusted in the TECHNICAL Menu)

Some feature described in this manual could be optional.

If your monitor do not show the feature described in this manual, please check first if you bough the described option. You can contact your distributor to upgrade your product and/or to install some optional tools.

Direct functions description

ENERGY MODE

Allows switching between different modes:

FULL BRIGHT: Maximum brightness and power consumption, the color calibration is deactivated.

CALIBRATED: Standard mode, the brightness and white point are calibrated according to the settings of MENU/COLORIMETRY

USER: Brightness is adjustable from 10% to 100%, color calibration is preserved. Allows having a reduced power mode between two takes.

F1: D56

F2: D65

F3: MANUAL (Adjustable in MENU/COLORIMETRY/)

It is necessary to wait a few seconds after pressing the pad before loading of the correct lookup table

MARKERS

Displays the markers selected with F1...F4

Not active when the ZOOM or FORMAT 2.40:1 are selected

This menu is contextual; some functions can be unavailable depending of the input format.

F1: 4:3

F2: 14:9

F3: 16:9

F4: ->

Next page

F1: SAFE area

F4: <-

Measure (Waveform, Vectorscope, Histogram)

Displays the selected measurement tools.

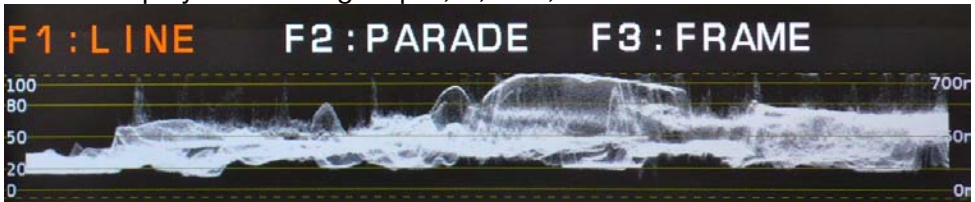
The brightness of the reticule and of the spot can be adjusted in the TECHNICAL MENU

White and black clipping alert can be configured in MENU/TOOLS/LIMITS/, the same limits are used for the waveform monitor and the histogram representation. Setting these limits is useful to have a visual alert on the waveform and histogram representation of the video signal if there is a risk of overexposure or of loss of black details.

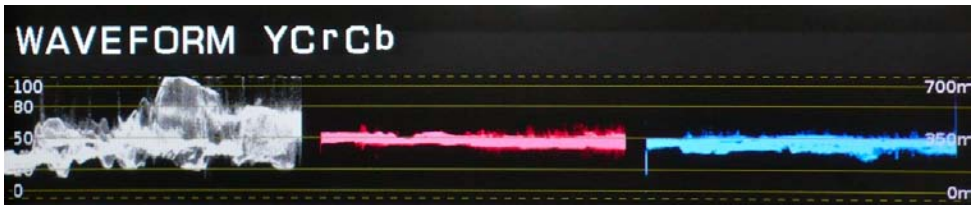
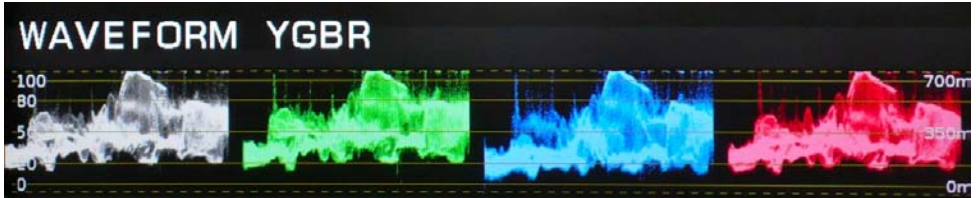
- F1: WAVEform
- F2: HISTOgram
- F3: VECTORscope

Selecting F1:WAVE gives access to an other sub-menu:

- F1: LINE
Displays one a single spot, Y, Red, Green or Blue



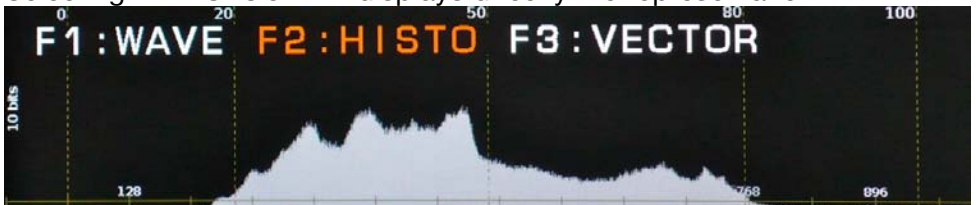
F2: PARADE
Displays Y, R, G, B, Pr & Pb in parade mode.
Available modes:
Y R G B / Y G B R
R G B / G B R
Y Cr Cr



F3: FRAME
Displays Y, R, G or B in frame mode. (also named sweep mode)
The content of one frame/picture is displayed.



Selecting F2:HISTOGRAM displays directly the representation:



F4: Return to the previous menu.

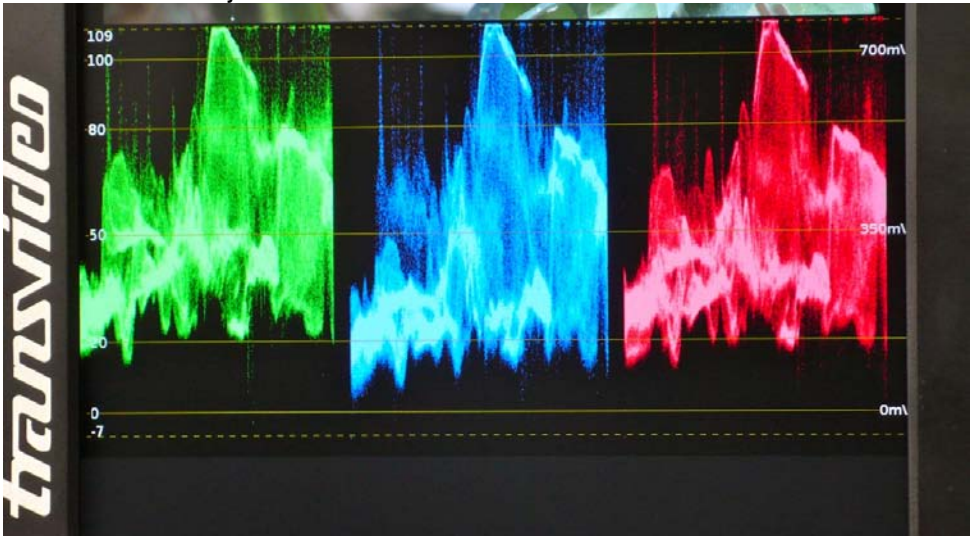
Selecting F3:VECTOR displays directly the representation:



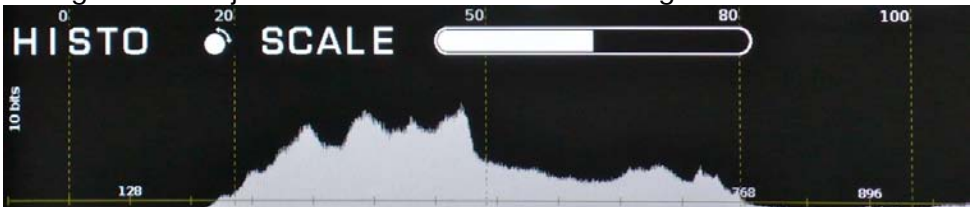
Rotating knob

When a measurement tool is displayed. Pressing the WFM pad gives the possibility to adjust the representation by using the blue rotating knob.

Waveform : 3 sizes of waveform are available
The background transparency in overlay mode can be adjusted in MENU/MEASURE



Histogram : Adjustment of the scale of the histogram



ZOOM

Displays the HD picture in full resolution mode (pixel to pixel). Depending of the input format, the magnification ratio can be different.

Displays the SD picture in full screen. In this case there is an important magnification ratio applied to the original picture, the resultant picture includes created pixels and lines and cannot be considered as a proof. In this mode the waveform will be superimposed to the picture.

Arrows & Rotating knob

In zoom mode arrows move the picture on Top/Bottom, Left/Right positions; Fine adjustment can be made by rotating the rotating knob.

A long push on the ZOOM pad centers the picture, the next push sends back to the full picture display.

During the zoom mode a pictogram is displayed in the right side of the tool zone.

This pictogram indicates the relative position of the magnified zone in the original picture.



ASPECT RATIO

Allows the change of aspect ratio between:

1.33:1	4/3	SD only
1.78:1	16/9	HD & SD
2.40:1		HD & SD

USER

User configurable input. This pad gives access to the function pre-selected in F1...F4 menu.

Page 1

F1: STATUS

Displays the status of the monitor and the input voltage from the power supply or the battery (for V-Lock equipped monitors)

F2: FOCUS *

Activates through the USER control the FOCUS HELPER function as programmed in MENU/TOOLS/FOCUS HELPER.

F3: EXPO *

Access to the OverExposure Control as configured in MENU/TOOLS/LIMITS/...

F4: ->

Jump to next page

Page 2

F1: MEM

Access to the Memory menu

F2: Horizon**

F3: ZONE

Allows to adjust the acquisition zone for the waveform and vectorscope.

Active when “1 line” or “12 lines” are selected.

F4: <-

Jump to previous page

* *FOCUS and EXPO can be activated simultaneously.*

If both are activated, pressing USER set up:

- a) *FOCUS + EXPO*
- b) *FOCUS*
- c) *EXPO*
- d) *Nothing*

** *The horizon is optional, if the horizon is not implemented, this menu will not appear.*

INPUT

Selects the input.

At selection, the format of the video is displayed

When no signal is available, displays “NO SYNC”

F1...F4 Selection of active inputs (Input board dependant)

CineMonitorHD6 SBL

F1: SDI (HD/SD)

F2: ACCessory (YPrPb or RGB or CVBS selected in
 TECHNICAL/ACCESSORY menu)

CineMonitorHD8/10/12/15

F1: SDI (HD/SD)

F2: CVBS

F3: ACCessory (YPrPb or RGB or CVBS selected in
 TECHNICAL/ACCESSORY menu)

CineMonitorHD6/8/10/12/15 option “SDI only”

F1: SDI 1

F2: SDI 2

Pressing F1...F4 activates or not the selected input. An active input appears in orange, an inactive in white. An inactivated input cannot be selected by the “INPUT SEL”.

Inactivating the accessory input reduce the power consumption of the CineMonitorHD of about 4 Watts.

The format of the ACCessory can be configured in the TECHNICAL MENU. It is possible to select between component YPrPb, component RGB and CVBS.

ADJUST

Select HUE (NTSC only), BRIGHTNESS, CONTRAST, SATURATION by pressing the pad.

Adjust the value by rotating the rotating knob

Validate by pushing the rotating knob

Important:

The settings are different for each input.

All settings are stored in setup memories.

There is one memory per input.

That means you can setup the ACCessory input differently of the SDI input. It is useful with some specific digital cameras offering a viewfinder menu and a HD SDI preview output.

MENU FUNCTIONS

ADJUSTMENTS

HUE (TINT)

Adjustment of the color phase.

This adjustment is only usable in NTSC when the monitor is equipped with a CVBS analog input.

Values from -90° to $+90^{\circ}$ each step 1°

BRIGHTNESS

Setup the black level of the signal from -174mV to $+174\text{mV}$ from the nominal position.

CONTRAST

Setup the gain of the video signal (Black to White level) from -100% to $+100\%$ around of the nominal position.

SATURATION

Setup the color saturation of the signal from -100% to $+100\%$ around of the nominal position.

BLUE CHECK

Sets the monitor in BLUE ONLY mode.

This mode is used to calibrate the monitor with an incident color bar.

COLORIMETRY

MANUAL

Allows the manual adjustment of RGB gain (from 0 to 2, nominal 1.00) and offset of the black (-127mV to $+126\text{mV}$, nominal 0 mV).

The nominal value in manual mode correspond to the D65 setup.

WARNING: In MANUAL there is a risk of displaying wrong colors; this option must be used carefully.

D56

Sets the monitor for a white point DAYLIGHT 5600

CIE 1931 Coordinates:

x: 0.3310

y: 0.3460

D65

Sets the monitor for a white point DAYLIGHT 6500

CIE 1931 Coordinates:

x: 0.3127

y: 0.3290

GAMMA

Adjust the grey point of the monitor according to the formula

$$V_c = V_s^{\left(\frac{1}{\gamma}\right)}$$

Where V_c represents the displayed signal and V_s is the incident signal. The correction is applied with a simulated response of CRT.

GAMMA ADJUST

Allows continuous adjustment $0.3 < \gamma < 2.5$

The indicated value is for the corrected signal and do not indicate the monitor's gamma.

STANDARD 0.45

Set the monitor to reproduce linearly a signal corrected by a γ of 0.45

Use in LINEAR

To use the monitor in linear mode, adjust the gamma to 1.00

LOCK

The lock function prevents errors after configuration and calibration of the monitor.

When the function is activated, “LOCK” is displayed on the screen at each attempt to enter in the menu or to access a direct function.

To overpass the function, the user must keep pressing the rotating knob for more than 5 seconds. It removes the function.

TOOLS

The tools make the richness of the CineMonitorHD evolution.

AUDIO

Displays the SDI embedded audio presence and a bargraph showing one audio pair on the 8 possible pairs.



AUDIO: ON/OFF

Activates or deactivates the function

CHANNEL PAIR: X

Selection of the pair displayed on the bargraph with the rotating knob.

POSITION

Allows placing the tool in different position of the screen by using arrows and the rotating knob when USER is selected in the menu.

DEFAULT replaces the tool at the factory preset.

TIMECODE

Displays the embedded VITC & or 2 or LTC Timecode.

TIMECODE: ON/OFF

Activates or deactivates the function

ATC: AUTO, LTC, VITC1, VITC2

Selection of the displayed VITC, in AUTO mode the first time code present is displayed (1: LTC, 2: VITC1, 3: VITC2)

POSITION

Allows placing the tool in different position of the screen by using arrows and the rotating knob when USER is selected in the menu.

DEFAULT replaces the tool at the factory preset.

COOKE LENS

Displays the datas of a i/lense.

Accepted lenses, COOKE S4/I, COOKE S5/i



MODULE: ON/OFF

Activates or deactivates the function

ZONE: OP+ASSIT, ASSIST, OFF

Selection of the lighted zones.

OPERATOR + ASSISTANT or ASSISTANT ONLY

BRIGHTNESS

Adjust the brightness of the LEDs.

UNIT

Selection of METRIC or IMPERIAL

FILM

Selection of 16mm or 35mm

FOCUS HELPER

Activates a precise focus helper displaying infocus zones with colored dots. The focus helper is based on a complex multidimensional digital filter.

The focus helper can be removed by the USER pad, the settings must have been previously

COLOR

Selection of the in focus zone color.

Red, Green, Blue, Yellow, Magenta, Cyan, Black or White.

LEVEL

Adjustment of the selectivity of the filter.

OFF, 1 to 5 (5 gives the highest effect)

FRAMELINE

This option allows displaying one locating cross and up to 3 programmable frames with or without center marker and a matting generator.

The menu shows different levels:

CROSS

CROSS ON/OFF

Activation of the cross

COLOR

Selection of the color of the lines

WIDTH

Selection of the width of the lines

V POS

Move the vertical position of the cross

H POS

Move the horizontal position of the cross

FRAME 1

FRAME 1 ON/OFF

Activation of the frame

CENTER ON

Activation of the center cross

COLOR

Modification of the color of the frame

DOT

Modification of the structure of the frame

SEND TO CENTER

Send the selected frame to the center of the screen.

V SIZE

Size of the frame (bottom part is moving)

H SIZE

Size of the frame (right part is moving)

V POS

Vertical position of the frame

H POS

Horizontal position of the frame

V ZOOM

Vertical homothetic modification of the frame

H ZOOM

Horizontal homothetic modification of the frame

FRAME 2

...

FRAME 3

...

SEND ALL TO CENTER

Send all frames to the center of the screen.

BCKGND COLOR

Change the background color outside of the frames.

HORIZON (if option installed)

This option allows displaying a virtual horizon on the screen.

The menu shows different levels:

SENSOR

Toggles between INTERNAL and BETZ.

In BETZ position it is possible to connect an external electronic bubble designed by Betz Tools. A specific cable is needed to power and remote the bubble through J001.

Transvideo do not support this third party equipment.

http://www.betz-tools.com/monitor_electronic-bubble.php

NORMAL / REVERSE

Toggles the action of the horizon, normal or reversed.

SENSITIVITY

Adjusts the sensitivity of the virtual horizon (True, X2, X4, X8, X16).

STYLE

Allows to display or not the Horizon on the monitor.

Selects the style of the virtual horizon (6 different models).

Selects the presence or not of the horizon.

0 CAL

Set the horizon to 0

A temporization of 5 seconds allows stabilizing the position of the system.

Pushing the rotating knob during calibration exits the timing.

POSITION

Allows placing the tool in different position of the screen by using arrows and the rotating knob when USER is selected in the menu.

DEFAULT replaces the tool at the factory preset.

LIMITS

The limits menu is a very important item of the CineMonitorHD family. It is used to setup the characteristics of the camera you are using and some safety levels which will be used in different tools.

MAX LEVEL

Set up the upper clipping level (White).

Adjustment goes from 69 IRE to 108 IRE

All information over the limit will be displayed in red on the waveform and the overexposed zone on the picture if the “overexposure control” is activated.

Default value: 107

WHITE CLIPPING

Set up the upper clipping level (White) on the waveform.

Adjustment goes from 69 IRE to 108 IRE

All information over the limit will be displayed in orange on the waveform and the overexposed zone on the picture if the “overexposure control” is activated.

Default value: 100

BLACK CLIPPING

Set up the lower clipping level (Black) on the waveform.

Adjustment goes from -7 IRE to 35 IRE

All information below the limit will be displayed orange on the waveform and dark blue on the underexposed zone on the picture if the “black limits” is activated.

Default value: 10

MIN LEVEL

Set up the low clipping level (Black).

Adjustment goes from -7 IRE to 35 IRE.

All information below the limit will be displayed orange on the waveform and medium blue on the underexposed zone on the picture if the “black limits” is activated.

Default value: 0

SORIN's MARKER

Sorin Dragoi is a German Director of Photography, he suggested this tool, which he is using mainly to check the exposure on skin tone. The Sorin's marker is used to see all light equivalent zones, i.e. to see the 0 stop zone of the picture.

The Sorin'sMarker is a mobile zone between the white and the back clipping. It is possible to adjust its position and its thickness (or width).

SORIN's MARKER WIDTH

Adjust symmetrically the thickness of the marker within the limits of the white and black clipping values.

OVEREXPOSURE: ON/OFF

Switch ON or OFF the overexposure control.

The MAX LEVEL and the WHITE CLIP are displayed in false colors when activated.

SORIN'S MARKER: ON/OFF

Switch ON or OFF the Sorin's Marker.

The Sorin's area is displayed in false colors when activated.

BLACK LIMITS: ON/OFF

Switch ON or OFF the black limits control.

The MIN LEVEL and the BLACK CLIP are displayed in false colors when activated.

MEASUREMENT

This option allows different setups for the video measurement tools. The settings apply to all video measurement tools except the histogram, which represents always the full picture.

SIGNAL ANALYSIS

Select 8 bits if the SIGNAL is 8 bits. Default value is 10 bits

OVEREXPOSURE: ON/OFF

Switch ON or OFF the overexposure zoning on the measurement tools.

SORIN'S MARKER: ON/OFF

Switch ON or OFF the Sorin's Marker zoning on the measurement tools.

BLACK LIMITS: ON/OFF

Switch ON or OFF the black limits zoning on the measurement tools.

1 LINE

Displays the measurement of one line selected with the rotating knob.

12 LINES

Displays the measurement of a group of 12 lines, the first line is selected with the rotating knob.

ALL LINES

Displays the measurement of the whole picture.

Background INTENSITY

Adjusts the overlay transparency behind the measurement tools when displayed in front of the picture.

SPOT INTENSITY

Adjusts the brightness of the waveform spot

RETICULE INTENSITY

Adjusts the brightness of the waveform reticule

TALLY

This option allows the use of the TALLY function.
The Tally is activated via the pin 1 and 6 of the GPI connector J002.

The menu shows different levels:

ACTIVE LOW/HIGH

Sets the state for TALLY ON

LED ON/OFF

Activates/deactivates the TALLY LED on the front panel.

TALLY BLINKING/FIX

Sets the active mode in TALLY ON

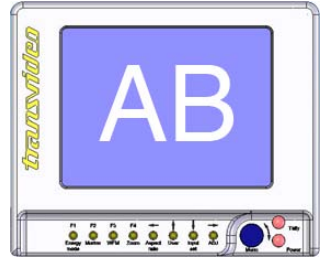
STYLE

Selects the style of the TALLY, including the TALLY FRAME which is active on FRAME3 of the FRAMELINE (The FRAMELINE option must be installed to use this mode).

PICTURE FX

NORMAL

Restores the standard display



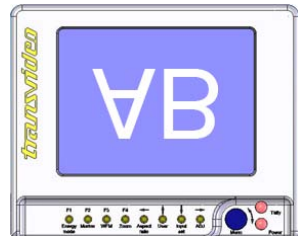
HORIZONTAL FLIP

Returns horizontally the picture.



VERTICAL FLIP

Returns vertically the picture.



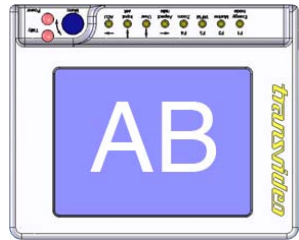
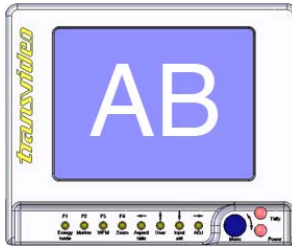
PICTURE REVERSE

Returns horizontally and vertically the picture.



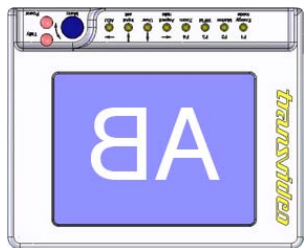
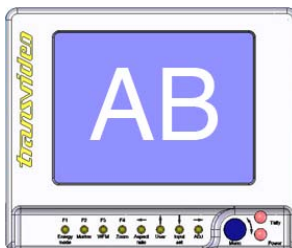
AUTO REVERSE

Returns automatically the picture if the monitor is up side down.



AUTO FLIP VERTICAL ONLY

Returns automatically the picture (vertical axis only) if the monitor is up side down



DISPLAY MODE

COLOR

Standard mode, displays the picture with 16 millions colors, 256 gray levels.

GREEN

Display the picture in green color only.
TINT and SATURATION are not working in this mode.
This mode has been invented by TRANSVIDEO in 1990 and is used since this time in Film & Night Vision systems.

B&W

Displays the picture with 256 gray levels.
TINT and SATURATION are not working in this mode.

SCAN

FULL

Displays all pixels and all lines

TECHNICAL

CVBS STD SELECT

Setting of the video composite standard.

AUTO DETECT Default value
PAL BGHID
NTSC 3.58

With some color video-assist unit it may appear that the picture will be displayed in black and white, in this case please select the appropriate standard.

NTSC

Setting of NTSC Japan (black 0 IRE) or US (black 7.5 IRE).
Rotating the rotating knob to the requested standard does the setting.

REVERSE SCROLLING

Allows to reverse the rotating knob incrementation.

ACCESSORY

Setting of the accessory input (when available)
An appropriate cable must be used.

COMPONENT RGB

HD or SD RGB signal with composite synchronization on the green channel is allowed.

COMPONENT YPrPb

HD or SD YPrPb signal is allowed.

CVBS

Composite video signal is allowed.

VOLTAGE ALARM LEVEL

Sets the threshold voltage from 10VDC to 36VDC.
Under this voltage an alert can be displayed on screen.

VOLTAGE ALARM DISPLAY

Setting of the VOLTAGE MONITORING ON or OFF

EXIT TEMPO

Setting of the auto exit temporization from SLOW to FAST

LED DIMMER

Dimming of the brightness of the “POWER ON” Led, it is possible to switch of completely the “POWER ON” Led.

MEMORY

MEM 1 ... MEM 4

4 user memories per input (ANALOG, SDI Accessory) are available to save user's configurations.

SAVE

SAVE the current user set-up in the memory.
All configuration except INPUT SEL is stored in the memory, including:

- Picture settings
- Tools settings
- Framing options

RECALL

Recall the settings stored in the memory.
The standard settings a factory loaded in this memory, they will be replaced at the first SAVE from the user.

PRESET

Set the default values in the setting registers.
PRESET does not erase the user presets.

PRESET ALL INPUTS

Presets the active input only

PRESET SELECTED INPUT

Presets the active input and other inputs of the monitor.

Service & Maintenance

General

Please read carefully the chapter « TRANSVIDEO Equipment Limited Warranty » about the warranty given by TRANSVIDEO S.A. on the equipment described in this manual.

For repairs after the warranty period, you can refer to your local TRANVIDEO Distributor/retailer or use the following procedure.

Useful tips

CLEANING

The painting of the CineMonitorHD is resistant to general cleaners and solvents. Do not use abrasive products to clean the CineMonitorHD.

The front glass is a high quality optical part. A metallic multi-layers vacuum deposit makes the anti-reflection coating. Do not use abrasive or acid cleaners. The microfiber cloth delivered with the CineMonitorHD is strongly recommended to clean the glass. Remove dust and particles of the glass before using the cloth. No liquid is normally necessary. If there is some dirt on the screen, it is possible to remove it with clean warm water.

The microfiber cloth collects grease particle in its structure. It is necessary to wash it when necessary with water and soap.

The microfiber cloth is orderable as spare part (see accessories)

FULL RESET

In case of need, it is possible to fully reset the CineMonitorHD.

Connect the monitor to a power source

Switch off the monitor with the power switch on the back

Press the “adjust” pad

Switch on the monitor keeping pressed the “adjust” pad until the display shows “FULL RESET”

This procedure totally erases all user setup in the memories.

Software and Firmware

The software, firmware and hardware version are indicated at the startup on the screen. This information is useful to keep in case of need for service purpose.

Calibration

The white point of the monitor is individually calibrated in factory for D65 and D56.

The calibration doesn't need to be performed except after some specific service operation as the replacement of the backlight unit or if you need to match a large inventory of CineMonitorHD after hundreds hours of use.

To perform the calibration, you need to send the product(s) to the factory.

Product Return

For technical operation you can return the product to the factory.

Previously you have to ask for a RAN (Return Authorization Number)

Please provide the following information:

- ① Product type
- ② Model
- ③ Serial Number
- ④ Purpose of the return

You can contact us by:

Email service@transvideo.fr

Fax +33 2 3260 1479

Phone +33 2 3232 2761

Then send the product to the following address :

TRANSVIDEO

RAN # _ _ _ _ _

ZI - Rue Francois Arago

27130 Verneuil sur Avre





France

You are responsible for the way of shipment and the insurance of your product. It is strongly recommended to inform us of the Tracking Number of your shipment followed by the RAN. By this way we will be able to follow the shipment.

Accessories

Slide	P/N 918TS0127	
<p>The Slide includes a ¼-20 nut. Can be attached with 2 x M4 on left, right, top and back of the CineMonitorHD</p>		
Clamp for Slide	P/N 918TS0131	
<p>Firmly secures the CineMonitorHD on a Spigot.</p>		
3D SWING ARM Strong with Clamp for slide	P/N 918TS0148	
<p>Includes a Clamp for slide, adapted on a 3D-SwingArm, reinforced for the CineMonitorHD, a 3/8-16 thread allows to fix the system to the camera. (adapters exist for ¼-20 and metric Ikegami cameras.</p>		
Carbon Handle	P/N 918TS0151	
<p>This carbon handle fits on the Shoulder strap pins.</p>		

Shoulder strap pin (2 per pack)	P/N 918TS0143	
Allows using Petrol, Kata or Porta-Brace shoulder straps.		
Sun & Night Hood	6" P/N 918TS0135 8" P/N 918TS0142	
High Quality Sun & Night Hood with movable/removable flap.		
Sun & Night Hood	6" P/N 918TS0157 8" P/N 918TS0159	
High Quality Sun & Night Hood with 4" extension.		
Light Hood	6" P/N 918TS0161 8" P/N 918TS0150	
Light Lexan® hood to use on Steadicam applications.		
Raincover	6" P/N 918TS0136 8" P/N 918TS0141	

Battery Back	P/N 918TS0137	
Standard version with V-mount. Available with PAG, ANTON BAUER or NP1 on request		
Micro fiber cloth	P/N 918TS0092	
Recommended cleaning cloth for the front glass		
Micro fiber bag	P/N 918TS0144	
Protects during transportation and on camera between takes.		
Power Supply AL24	P/N 918TS0040	
For CineMonitorHD 6, 6SBL, 8 & 15 Studio.		

Specifications

Common Characteristics

Parameter	Value	Unit
Supported HD standards	720p 1080p, i, psF	
Supported SD standards	NTSC-M / NTSC-J NTSC-443 PAL-M PAL-BG SECAM PAL-N	
Display mode	Color	
Picture resolution	Depends of the standard	
Storage temperature	-40°C +80°C	°C °F
Operating temperature	-20°C +55°C	°C °F
Display type	AMLCD	
Color calibration	D65 ITU-R BT.709-5 D56	
Color space	Rec. ITU-R BT.709-5	
Latency	Less than 1 frame in 1080 i and PsF, SD. Less than 1 image in 720 and 1080 p	

Specific - CineMonitorHD6 / HD6 SBL

Parameter	Value	Unit
Dimensions	d58 x w195 x h160	Centimeter
	d2.30 x w7.70 x h6.30	Inches
Weight	1250 / 2.8	Gram / Lb
Power	10– 36 / 14.5 (15.5 SBL)	Volts DC/watts
Brightness	350, SBL 1000	NIT
Contrast ratio	500 : 1 (600:1 SBL)	-
Sight angle	±70 H +70-60V (±80 +60-80 SBL)	°

Specific - CineMonitorHD8

Parameter	Value	Unit
Dimensions	d62 x w215 x h183	Centimeter
	d2.44 x w8.46 x h7.20	Inches
Weight	1680 / 3.7	Grams / Lbs
Power	10 – 36 / 17.5	Volts DC/watts
Brightness	450	NITs
Contrast ratio	500 : 1	-
Sight angle	±85 H&V	°

Specific – CineMonitorHD12 SB

Parameter	Value	Unit
Dimensions	d68 x w298 x h285	Centimeter
	d2.67 x w11.7 x h11.2	Inches
Weight	3700 / 8.1	Grams / Lbs
Power	11 – 36 / 32	Volts DC/watts
Brightness	1000	NITs
Contrast ratio	500 : 1	-
Sight angle	±85 H, +70-80V	°

Specific – CineMonitorHD15 Studio / HD15 SB

Parameter	Value	Unit
Dimensions	D68 x w344 x h303	Centimeter
	d2.67 x w13.54 x h11.92	Inches
Weight	4850 / 10.6	Grams / Lbs
Power	10– 36 / 30 (50 SB)	Volts DC/watts
Brightness	350 (1200 SB)	NITs
Contrast ratio	800:1 (500 : 1 SB)	-
Sight angle	±85H&V, (±85 H, +70-80V SB)	°

Connectors

TRANSVIDEO manufactures high quality cable assemblies and custom cables.
We encourage you to use original cables.
TRANSVIDEO cannot be liable for use of defective cables.

Accessory connector



- 1 GND
- 2 10 to 36 IN/OUT
- 3 Y/CVBS2/G
- 4 GND VIDEO
- 5 Pr/R
- 6 Pb/B
- 7 Run
- 8 GND Run



Mating plug:
LEMO8
FGG1B308CLAD62

GPI CONNECTOR J0002

Sets the function attached to each remote input on J002.

The default setup is:

J002/1 TALLY (tally active when the contact is established)

J002/2 ZOOM (change of state with a temporary contact)

J002/3 INPUT SELECT (change of input with a temporary contact)

J002/4 HORIZON "0" LEVEL (calibrate with a temporary contact)

J002/6,7,8,9 GND for pins 1,2,3,4

TRANSVIDEO Equipment Limited Warranty

TRANSVIDEO S.A gives the warranty set forward below.

The limited warranty is only effective upon presentation of your Bill of Sale or other proof of purchase.

TRANSVIDEO equipment is warranted under normal use, against defective materials or workmanship as follows:

Parts: Defective parts will be exchanged for new parts or comparable rebuilt parts for a period of TWO YEARS from the date of original purchase.

Labor: For a period of TWO YEARS from the date of original purchase, labor will be provided free of charge by our factory service centers or designated service facilities located in country where the product have been purchased, or by the factory.

When returning equipment under this warranty, you must pre-pay the shipping charges, and you must enclose the Bill of Sale or other proof of purchase with a complete explanation of the problem. During your TWO-YEAR warranty period, repairs will be made and the equipment return-shipped to you free of charge. After your warranty period is over, you will be given an estimate of the cost of repair and an opportunity to approve or disapprove of the repair expense before it is incurred. If you approve, repairs will be made and the equipment return shipped to you. (shipping charges apply). If you disapprove, we will return-ship the equipment at no charge to you. (shipping charges apply). Non-Transvideo brand peripheral equipment and software which may be distributed with Transvideo products are sold "AS IS" without warranty of any kind by Transvideo, including any implied warranty regarding merchantability or fitness for a particular purpose. The manufacturer or producer gives the sole warranty with respect to such non-transvideo brand items

Thereof :

Transvideo shall have no responsibility under this limited warranty for use of Transvideo product in conjunction with incompatible equipment or peripheral equipment.

In order to obtain warranty service, contact the authorized Transvideo retail dealer from whom you purchased the product or contact the factory :

By phone +33 2 3232 2761

By fax +33 2 3260 1479

By email service@transvideo.fr

You will be directed to the nearest service facility for your product.

If there is no service facility in your region, you will receive a RAN (Return Authorization Number) and instruction to return your product to the factory.

This Limited Warranty covers all defects encountered in normal use of the equipment and does not apply in the following cases:

Loss or damage to the equipment due to abuse, mishandling, accident, improper maintenance, or failure to follow operating instructions;

If the equipment is defective as a result of leaking batteries, sand, dirt or water damage; If defects or damages are caused by the use of unauthorized parts or by service other than our authorized agent.

This Limited Warranty does not cover cabinet (exterior finish).

This warranty does not cover units sold to military operations or avionics. These uses are covered only by such specific warranty as Transvideo may issue with such sales.

This Limited Warranty does not apply to accessories or consumables for the product, which are sold "AS IS", without warranty of any kind by Transvideo. Please retain this warranty card and your Bill of Sale as a permanent record of your purchase. This card is most important in order to be sure you are contacted right away should there be a safety inspection, modification or product recall under applicable laws or regulations.

NO IMPLIED WARRANTY, INCLUDING MERCHANTABILITY AND FITNESS FOR A PARTICULAR PURPOSE APPLIES TO THIS EQUIPMENT AFTER THE APPLICABLE PERIOD OF EXPRESS WARRANTY OR GUARANTY, EXCEPT AS MENTIONED ABOVE, GIVEN BY ANY PERSON, FIRM OR CORPORATION WITH RESPECT TO THIS EQUIPMENT SHALL BIND THE UNDERSIGNED..

TRANSVIDEO SHALL NOT BE LIABLE FOR LOSS OF REVENUES OR PROFITS, EXPENSE FOR SUBSTITUTE EQUIPMENT OR SERVICE, STORAGE CHARGES, LOSS OF DATA, OR ANY OTHER SPECIAL, INCIDENTAL OR CONSEQUENTIAL DAMAGES CAUSED BY THE USE, MISUSE OR INABILITY TO USE THE PRODUCT, REGARDLESS OF THE LEGAL THEORY ON WHICH THE CLAIM IS BASED, AND EVEN IF TRANSVIDEO HAS BEEN ADVISED OF THE POSSIBILITY OF SUCH DAMAGES. NOR SHALL RECOVERY OF ANY KIND AGAINST TRANSVIDEO BE GREATER THAN THE PURCHASE PRICE OF THE P>RODUCT SOLD BY TRANSVIDEO AND CAUSING THE ALLEGED DAMAGE. WITHOUT LIMITING THE FOREGOING, YOU ASSUME ALL RISK AND LIABILITY FOR LOSS, DAMAGE OR INJURY TO YOU AND YOUR PROPERTY AND TO OTHERS AND THEIR PROPERTY ARISING OUT OF USE, MISUSE OR INABILITY TO USE THE PRODUCT NOT CAUSED DIRECTLY BY THE NEGLIGENCE OF TRANSVIDEO. THIS WARRANTY SHALL NOT EXTEND TO ANYONE OTHER THAN THE ORIGINAL PURCHASER OF THIS EQUIPMENT.

Notes

My CineMonitor

Model

CineMonitorHD__

Serial number

		S				
--	--	----------	--	--	--	--



Dealer:

A large, empty rectangular box with a black border, intended for a dealer's name or information.

TRANSVIDEO S.A.
Zone Industrielle
F-27135 Verneuil sur Avre
Tel +33 2 3232 2761
Fax +33 2 32 601479
Email info@transvideo.fr

<http://transvideo.fr>
<http://transvideointl.com>